

Device Management

- Do you want utilities that make it easier to manage the imageRUNNER® devices on your network?
- Do you want to easily manage and control user access and set page limits for scan, copy, and print functionality?
- Would you benefit from the ability to check and manage the imageRUNNER device status remotely?
- Do you spend a lot of time entering address book information and other system data at each imageRUNNER device on the network?

Solution

Canon's Device Management Tools and Utilities

Canon offers several tools and utilities that can answer the device management needs of all types of environments. From a small office or home office with a single device to a large organization managing a fleet of imageRUNNER devices, Canon can help ease the administrative burdens of device management.

Canon supports the following device management utilities and features:

Device Control

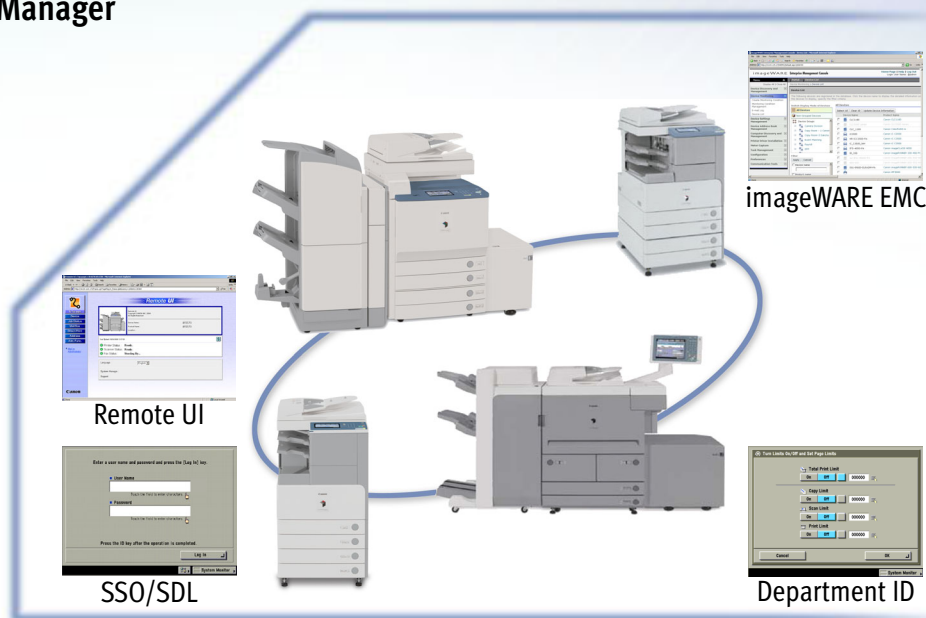
- Remote UI
- imageWARE™ Enterprise Management Console
- Device Information Delivery Function

Output Control

- Department ID
- imageWARE Accounting Manager

Usage Control (User Authentication)

- Single Sign-On (SSO)
- Simple Device Log-in (SDL)



NOTE: The features discussed may not be available for all imageRUNNER devices. They may require optional equipment. Check with your local Authorized Canon Dealer for more information.

How Do You Do It?

Device Control

The following features allow system administrators to easily manage and maintain their fleet of imageRUNNER devices.

Remote UI (User Interface) is preinstalled software that enables you to control, confirm, and register a particular imageRUNNER device's functions by using a Web browser at a user or administrator's workstation. Once a user or administrator accesses the Remote UI, they can perform functions such as printing documents stored in User Inboxes, editing the Address Book, and viewing and managing information regarding device and job status.

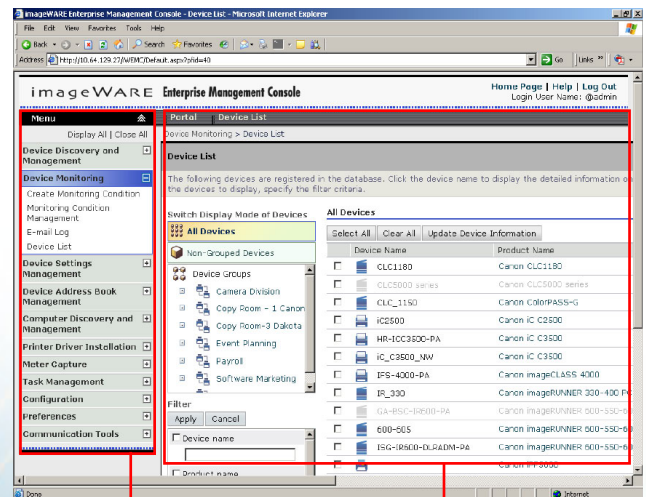
imageWARE Enterprise Management Console is a solution that enables centralized management of network devices from a Web browser. imageWARE Enterprise Management Console helps reduce the IT Manager's workload by offering a multitude of features, such as discovering new devices at set intervals automatically, sending e-mail alerts about device errors, retrieving device settings information, and delivering the same settings to a fleet of devices. Plus, versatile plug-ins support additional value-added capabilities.

The Device Information Deliver Function allows the administrator to easily manage and maintain multiple devices on a network by allowing them to enter management data at one imageRUNNER device, and automatically distribute and register this information to up to 100 other imageRUNNER devices on the network. Data that can be distributed may include the Address Book (including Forwarding settings and Favorites buttons), Department ID settings, Web Access Favorites buttons, Printer settings, and Additional Functions settings.

How Do You Do It?

Accessing imageWARE Enterprise Management Console

1. Download imageWARE Enterprise Management Console free of charge from www.usa.canon.com.
2. Enter the IP address of the imageWARE Enterprise Management Console server into your Web browser.
3. The imageWARE Enterprise Management Console Portal is displayed.
4. From here you can perform various functions, such as view real-time device status, configure device settings, remotely install printer drivers, retrieve/distribute Address Books on imageRUNNER devices, and retrieve device counter information.



How Do You Do It?

Output Control

The following features allow system administrators to control and track the use of specific functions of the imageRUNNER device.

Department ID Management is a standard feature on most imageRUNNER devices. With Department ID Mode, access to the system is provided only to those users with a valid ID and password. This feature allows administrators to control and monitor page limits for scan, copy, and print for both walk-up and remote users. Department ID can also be used with an optional Control Card/Card Reader system.

imageWARE Accounting Manager is a Web-based document accounting and analysis solution from Canon. This solution allows a system administrator to track copy, print, scan, and fax usage by department/user and by device, as well as restrict output for print and copy jobs. Other features include the ability to analyze department/device workload, analyze device usage costs, re-allocate printing/copying assets, distinguish between color and black-and-white print/copy jobs, and a charge-back function for per project billing (Billing Codes Plug-in).

Usage Control (User Authentication)

The following features allow system administrators to control access to the imageRUNNER device and track which users are logging on and which functions they're using.

Single Sign-on (SSO) is easy to use and administrate in environments utilizing Active Directory. With SSO, users are only granted access to the imageRUNNER device when they enter the same ID and password that they use for their PCs and other networked data-sharing privileges.

Simple Device Log-in (SDL) is an extension of Department ID Management that grants system access only after verifying an additional personal ID and password after the Department ID.

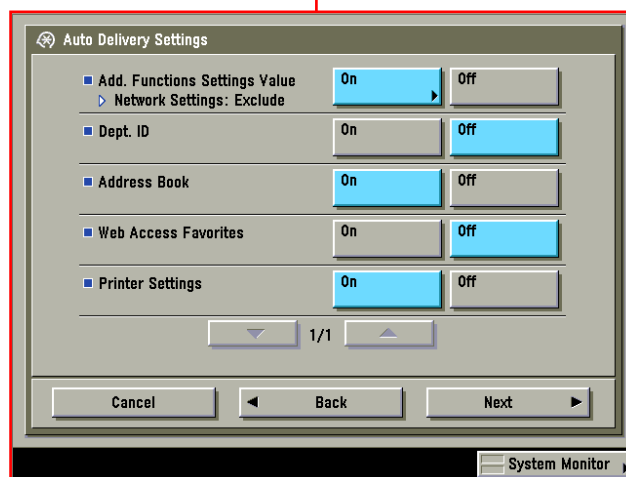
How Do You Do It?

Specify Device Information Delivery Settings with Auto Delivery

1. At the control panel of the reference device, select **[Additional Functions]** → **[System Setting]** → **[Device Information Delivery Settings]**.
2. Select **[Auto Delivery Settings]** under Transmitting Settings.
3. Select the day(s) and time(s) that you would like the information to be automatically distributed and press **[Next]**.
4. Specify the information you would like to transfer by selecting **[On]**. Press **[Next]**.
5. Select the destination(s) to where you would like to distribute the information. Press **[OK]**.

Note: Destinations must be registered prior to making these settings in the [Register Destinations] section under Transmitting Settings. You can also select manual delivery for ad hoc distribution.

4



Device Management Features and Utilities

Benefits

- Saves time by allowing administrators to control and manage system activities and settings from a remote location through the Remote UI and imageWARE Enterprise Management Console.
- Alleviates many administrative burdens with the ability to install and manage multiple Canon and third-party devices on the network with imageWARE Enterprise Management Console.
- Helps prevent misuse of the device and save on supplies, consumables, and usage costs with the ability to control individual or group print or copy activity.
- Reduces device setup time with the ability to distribute information, such as Address Book destinations, to multiple devices on the network.

FAQ

Q: Can you set restrictions for accessing Remote UI?

A: The Remote UI can only be accessed from computers that are on the same network as the device. If the device is set up with a User Authentication Mode (SSO or SDL), the user will be required to enter the appropriate log-in information to access the Remote UI. The System Administrator can also put an ID on the System Manager settings so that they can only be viewed and accessed by authorized individuals.

Q: Can imageWARE Enterprise Management Console monitor devices other than Canon devices?

A: imageWARE Enterprise Management Console supports both Canon and devices other than Canon's devices for monitoring.

Q: What is the maximum number of devices supported on a single imageWARE Enterprise Management Console server?

A: The maximum number of devices supported on a single server is 1,000.

Q: Can you set up, monitor, and track the User Authentication functions from a remote location?

A: Yes. Administrators can access the Department ID mode from the device's Remote UI. SSO and SDL can be set up and monitored remotely through MEAP[®] SMS (System Management Service), which can be accessed from the administrator's Web browser. Please refer to the SSO/SDL Solutions Scenario, and the appropriate operator's manuals for additional information.

Q: When using the Device Information Delivery Function, can you set the device to automatically distribute information at a specified time during the week or every day?

A: Yes. Auto delivery settings can be made so that the information is distributed at an administrator-specified time and day.

Q: What can I do if I have over 100 devices on the network that I'd like to distribute information to using Device Information Delivery Function?

A: You can distribute the information to over 100 devices on the network by setting up one reference device to distribute the information to the first 100 devices, then specifying another device that had just received the information to automatically send to the remaining devices on the network.

Canon
image*ANYWARE*

1-800-OK-CANON
www.usa.canon.com

Canon U.S.A., Inc.
One Canon Plaza
Lake Success, NY 11042

CANON, IMAGERUNNER, and MEAP are registered trademarks of Canon Inc. in the United States and may also be registered trademarks or trademarks in other countries. IMAGEWARE is a registered trademark of Canon U.S.A., Inc. in the United States and is a trademark of Canon Inc. in certain other countries. IMAGEANYWARE is a trademark of Canon. All referenced product names and other marks are trademarks of their respective owners. Specifications and availability subject to change without notice. ©2006 Canon U.S.A., Inc. All rights reserved.